

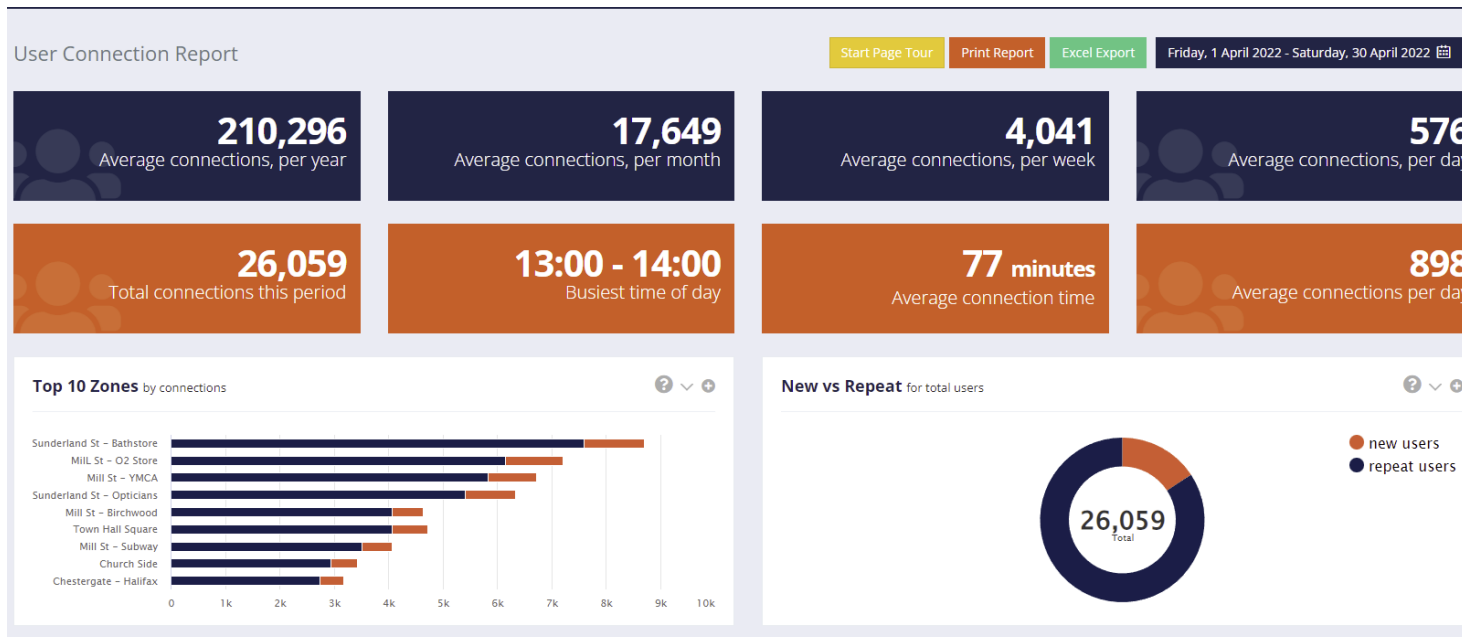
Report Statement

Report Purpose:
WIFI Figures

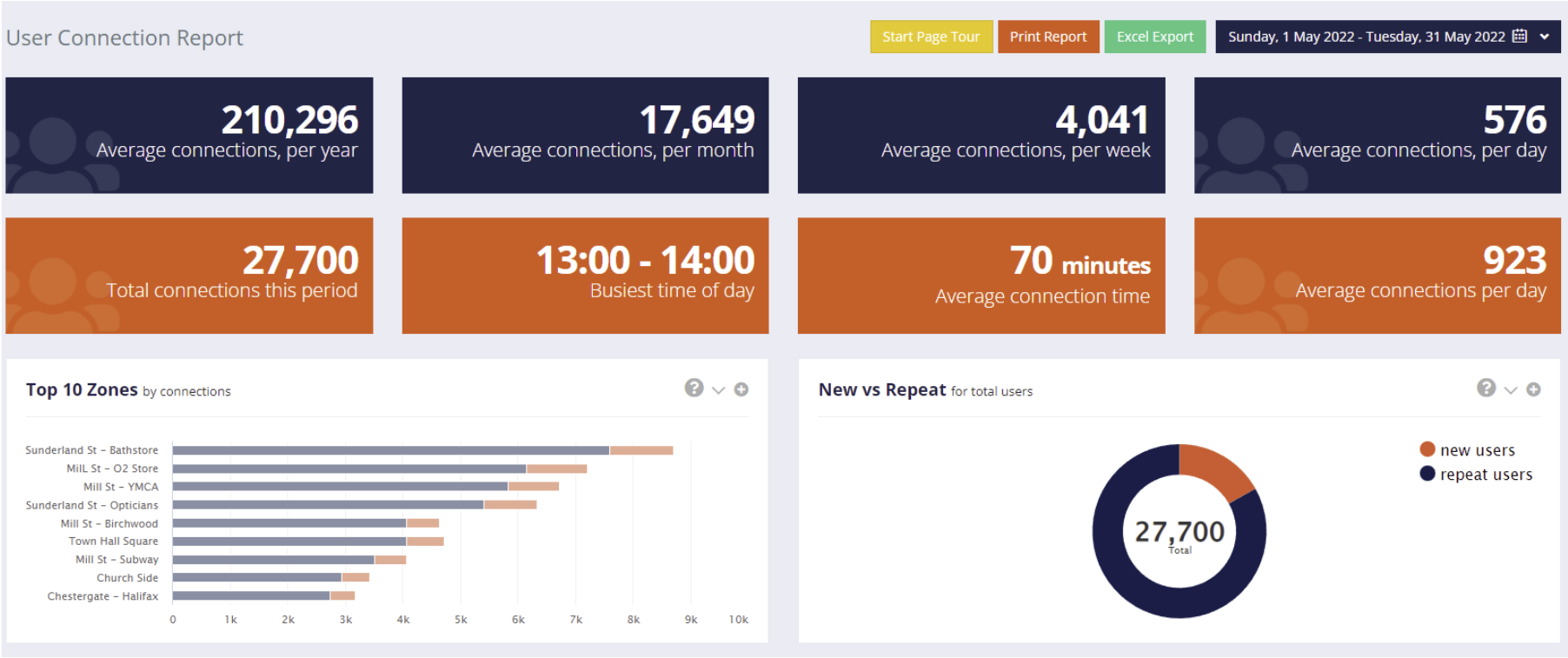
Version Control:
v1

Looking at the data for the last three months we can see that wifi access across all three months is fairly consistent (June is slightly lower as it isn't the full month) with an average of 25,661 connections per month. The busiest time remains lunchtime which is to be expected, with connection times around 70 minutes.

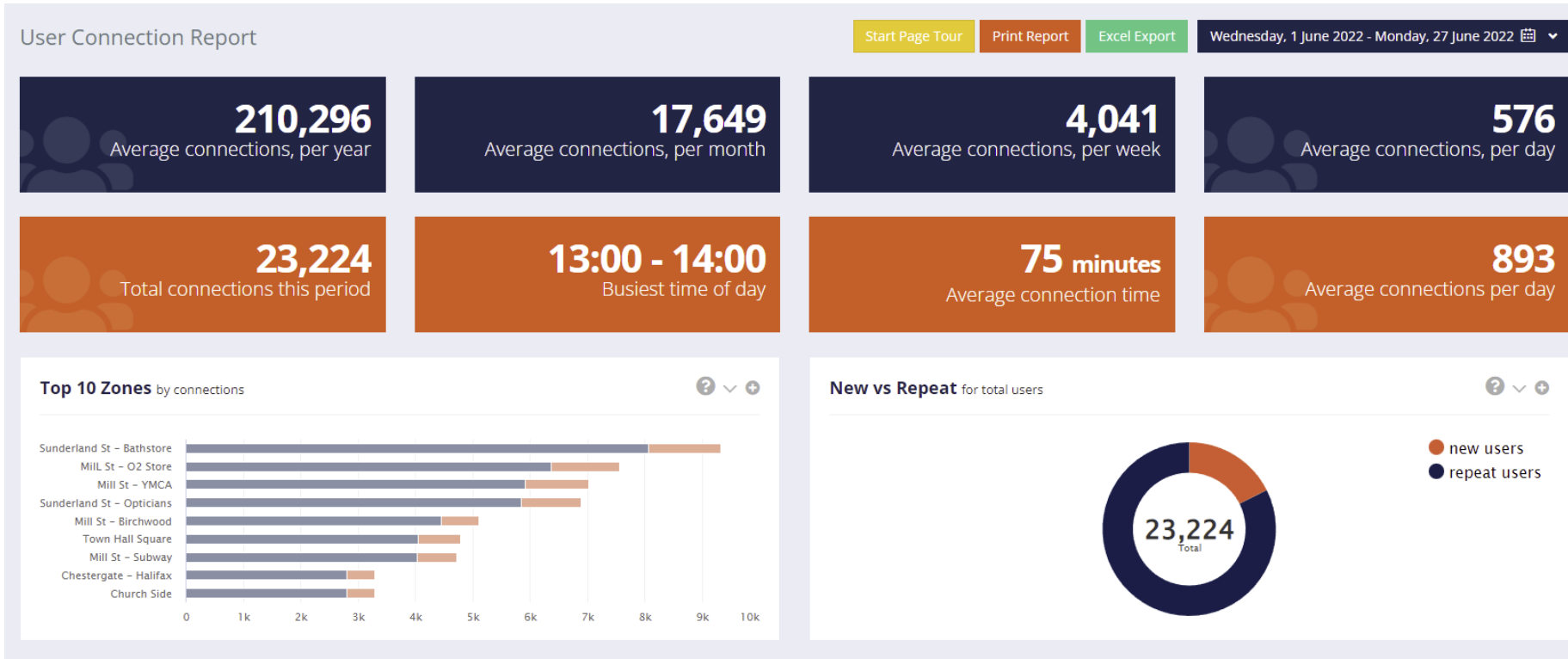
INTELLI-SENSE
1 April -30th April 2022



1 May – 31st May 2022



1 June -27th June 2022



Website address www.elephantwifi.co.uk

END OF DOCUMENT