



# MACCLESFIELD IN BLOOM

---

PORTFOLIO 2022





# ABOUT MACCLESFIELD

Macclesfield has been a Britain in Bloom town since 2018. As well as focussing on bringing a variety of colours, textures and scents to the town in order to create an attractive place to live, work and visit, the Macclesfield in Bloom committee are also focused on adding to our activities and embracing a more sustainable approach such as; making the switch to peat free compost, making our planting more sustainable, increasing the biodiversity of the area as well as making greater use of recycled materials .

Macclesfield Town Council continue to be the main financial supporter of Macclesfield in Bloom, whilst also offering the support of the Macclesfield Town Ranger team as well as administrative help.

Macclesfield In Bloom Committee;  
Cllr Janet Jackson MBE, John Williams, Andrew McKeith, Laura Smith, Abi Sherratt

Would like to thank;  
Cllr Mike Hutchison, Alejandra Salmon-Suarez, Grow Macclesfield, Val Taylor, Tunnicliffe Signs, Doug Christie, Mick Plant, ANSA, Cheshire East Council, Peaks & Plains Housing Trust, Gordon Richardson, Macc Wild Network, Macclesfield Community Garden Centre, One Project Macclesfield, Marc Jackson, Matt Todd, Birgit Grimshaw, Olympus Trophies, Karyn Johnson, East Cheshire Hospice.

---

**MACCLESFIELD TOWN  
RANGERS LOOK AFTER  
OVER 70 PLANTERS &  
AREAS AROUND TOWN**

---



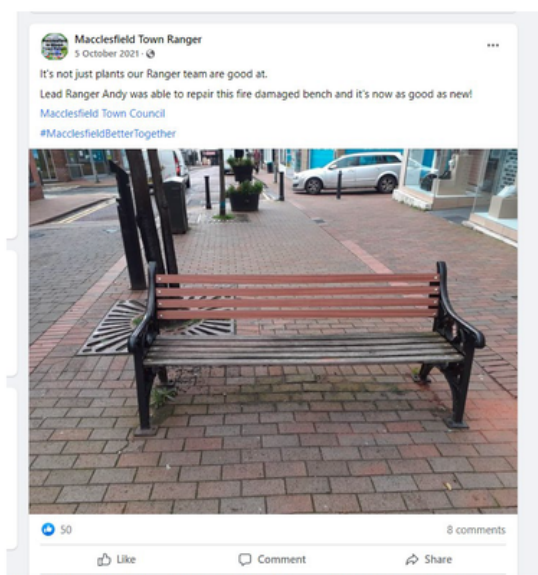
# MACCLESFIELD TOWN RANGERS



In 2021 we recruited a new Lead Ranger to our Town Ranger service.

Andrew McKeith brings a wealth of knowledge to the role and has taken his two team members Damon and Sean from strength to strength, developing and improving their skills wherever possible. The team was also joined by a Junior Ranger this year as part of the Governments Kickstarter scheme.

The rangers are well known around town and on their social media page where they have over 1200 followers, and often will get members of the public coming to enquire what they are doing whilst they are completing a planting job, repairing a bench with recycled materials, cleaning up a grot spot, cutting back a hedge that blocks a pavement or sign or speaking to a community group. Andrew is also a popular addition to Macclesfield Town Councillor 'Meet the Councillor' events as a lot of the feedback is with regards to the public realm.



# OUR

## July

- Town Rangers tidy up town centre flower beds
- The Town Rangers also move further out into wards of the town to help tidy some community beds



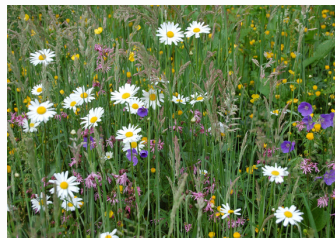
## August

- Town Ranger service spend the month ensuring everything is watered sufficiently and having a general tidy up



## September

- Macclesfield Town Council approve a grant to St Peters church for a wildflowering project and to Macclesfield College for their garden project



## October

- Macclesfield Town Rangers start their winter planting with some colourful lamp post planters and the addition of feature planting to the planters at the Town Hall



## November

- Macc Wild Network speak at Macctastic meeting about proposed project to rewild part of South Park
- New planters go in outside the Heritage Centre (Old Sunday School) courtesy of the Rangers



## December

- Christmas tree is decorated with the help of a local community group and volunteers who upcycled some wood into beautiful plaques





# YEAR

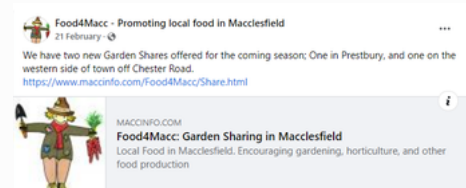
## January



- Work starts on tree planting at schools in the area
- Grow Macclesfield nominated at the Community ReAward ceremony

## February

- Local community group Cre8 held a public spring plant sale, offering many different varieties as well as planting advice
- Food4Macc open two new garden shares



## March

- Planting started at Portland Walk, with Councillors and Rangers plus local residents whose houses open onto the area
- MTC and CEC/ANSA go Peat free

## April

- MTC started the promotion of No Mow May around town
- Town Council staff, volunteers and the Rangers sowed a wildflower meadow

Macclesfield Town Council supports



## May

- Cheshire East Council launch the South Park Masterplan involving the Town Council and local groups such as S:Park (friends of South Park)
- Macctastic and MTC hold Eco Summit

## June

- Town Rangers re-planted a roundabout with a more formal look
- Planters around town received a summer spruce up





---

## HORTICULTURE - PARKS AND PUBLIC SPACES

---

### HERITAGE WALK

Since the last visit of the Britain in Bloom team, much work has been done to improve Heritage Walk predominantly with regards to the history of the area; a display board has been added, as well as reconstructed engine and plaque, the archway has been repainted and the 'silk moths' made more of a feature.

A tree commemorating those who died during the pandemic and one celebrating the Jubilee have been added to the space.

### SPARROW PARK

Sparrow Park is an historic town centre park, located behind the Town Hall on Bunker Hill. It offers panoramic views across Macclesfield to the Peak District and is an attractive space for the public to sit, rest, and socialise. It is also one of very few green spaces within the town centre.

Macclesfield Town Rangers have recently been involved in improvements to the park with the addition of lamp post planters and a central 3 tier planter focal point.

### VICTORIA PARK

A municipal park created in 1984, Victoria Park is a well used area in the east of the town.

Cheshire East Council have recently conducted a consultation with local residents and users with a view to planning sensitive enhancements.

Currently the park has many areas that have been left to grow wild to encourage diverse plant and wildlife, complimented by beautiful and well established rose bushes.





---

## HORTICULTURE - TOWN CENTRE PLANTING

---

### SPRING/SUMMER PLANTERS

Just recently the Macclesfield Town Ranger team and ANSA have completed the summer planting.

Planters all over town have had a refresh, with new blooms added to the standard planters, the square [planters which enhance the front of the Town Hall, 3-tier planters, hanging baskets, lamp post planters and barrier planters around town.

### WINDOW BOXES

The window boxes currently adorning the Town Hall are the original ones from 1979 when Macclesfield Borough Council was the unitary authority.

Due to issues with the sandstone windowsills, the boxes were removed and have been stored for many years. The Town Rangers have now repainted and repaired the boxes, and planted them up with plants that compliment the other planters around the Market Place.





# HORTICULTURE - MACCLESFIELD BUSINESSES



Waters Green Tavern

Proper Sound

The Copper Room

PR Jones

Gas Town Cafe Bar

N Carters Butcher

Cherry Blossom Bakery

Wet Led

Salt Bar

Five Clouds

R&G Beer Vault

Plums Kitchen

The Fountain

Turquoise

Cheshire Cat

The Castle

De Jour

La Dulce Vendimia

Holden & Prescott

Henbury Travel

Acacia Tree







## HORTICULTURE - PUBLIC REALM

There have been many improvements to the public realm over the last year, most visible is Cheshire East Councils £1.6 million regeneration of Castle Street. Creating wider footpaths to enable outdoor seating areas, upgrades to the benches, inclusion of trees with festoon lighting and 15 brand new Corten planters which were purchased with Welcome Back funding and are maintained by the Town Rangers.



In September 2021 the Pocket Park at the bus station was completed. Funded by Cheshire East Council and planters maintained by Macclesfield Town Council Rangers. With an established bed against a sunny wall and barrier planters currently sporting summer blooms, the spot is the perfect place to sit and take in the new Ian Curtis from Joy Division mural painted by Aske-P19.

Early in 2022 Macclesfield Town Council took over two red phone boxes outside of the Town Hall. The Ranger team have worked extremely hard to overhaul the boxes, clean and repaint, and deck them out with floral displays front and back. To compliment them and to tie in with the Jubilee celebrations, they also created two flora crowns.





---

## HORTICULTURE - TREE PLANTING

---

Macclesfield Town Council declared a climate emergency in 2019. Planting trees is one of the best ways to tackle the climate crisis and the town has embraced this.

This year the Town Council has planted the following;

- 11 COVID-19 commemoration trees
- 8 Jubilee trees
- 22 additional trees

The tree types include amongst others; Quercus Robur, Sorbus Acuparia, Carpinus Betulus, Prunus Serrula

These trees are planted in parks, patches of greenery on estates, in school or care home grounds, and at our local hospital.

The COVID-19 commemoration trees in particular are very poignant coming as they do at the end of a very difficult time for everyone in the town.

All of the trees planted by the Town Council have been registered as part of the Queens Green Canopy.







## ENVIRONMENT- BIODIVERSITY

A lot of the planting work done around the town is dual purpose. Not only does it bring greenery to the town, encourage others to try sustainable planting, create beautiful floral displays and increase variety, but it also creates the perfect habitat for wildlife. Some of the work done has been specific in trying to increase pollinators and bird life.

One Project's Plant Swap takes place at the monthly Treacle Market. Plants which are surplus to requirement can be swapped, or picked up for a donation.

Macclesfield Community Tree Nursery have created a whole host of tree 'fosterers' around the town, looking after seedlings and saplings until they can be planted out

Wildflowering projects at Macclesfield Leisure Centre and on Westminster Road were created with a view to increasing vital food sources for pollinators.

Bird life around Macclesfield is very important with the Town Council making a grant donation to Swifts Over Macclesfield

to provide much needed swift nesting boxes for the large population of swifts that visit the town every year. As well swifts there are also a number of popular nesting boxes at Heritage Walk.

The Town Council also run a yearly event, called Nature Needs You which involves local green community groups, RSPB, local rangers and much more, with a focus on educating young people about the natural world in a fun way.

**Macclesfield Community Tree Nursery**  
23 May at 22:41 · 🌱  
[Event]  
Would anyone like to act as a mini satellite growing outpost for us? We've got a lot of seed to sow at the moment but not many places to sow it. So, if you have little bit of room / large seed tray / unused growing bed etc... you could really help us out.  
We could provide seeds / seedlings / saplings. You could find a bit of space somewhere (maybe need a max of 0.5 x 1m), and grow them a bit bigger for us. Keep any that you want for yourself and give the surplus back to us when ready.  
One day we'll have a large plot we can use. But in the meantime, we need to reply on people like you to help us out.  
Anyway, have a think and let us know if interested.



**One Project Macclesfield is at Treacle Market.**  
25 April · Macclesfield · 📍  
We just wanted to say a huge thank - you to everyone else who came to see us at @treacemarket yesterday.  
We had so many swaps we could not keep count. So nice to see all the plants, seeds, birds, pots, trays and much more being passed on and going to new homes.  
It was such a lovely sunny day and the market was super busy with such fab activities going on for everyone to enjoy... See more



**Swifts Over Macclesfield**  
9 September 2021 · 🌱

Highlighting the loss of our swifts .....



**Cheshire Wildlife Trust**  
9 September 2021 · 🌱

We know swifts will be embarking on their 6,000 mile trip back to South Africa at the moment. But one particular swift is staying in Cheshire just a little bit longer... 🌱💚

Read more 🌱 <http://ow.ly/c1oH50G6QNp> #WilderCheshire #Macclesfield

## COMMUNITY - PROJECTS AND PARTNERSHIPS



**BEFORE**



**AFTER**

### **SOUTH PARK COMMUNITY ALLOTMENT**

Taken over in October 2021 by Grow Macclesfield, this overgrown and unused allotment has been turned into a sanctuary for growing, and is visited by many different community groups who are keen to learn how to grow their own plants and vegetables.

### **PORTLAND WALK**

Cllr Mike Hutchison used his ward budget to create a stunning community garden in the middle of a housing estate. With help from, Grow Macclesfield, residents and the local school this area was transformed and continues to be well looked after.



**BEFORE**



**AFTER**

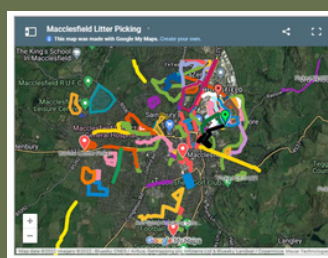
### **EAST CHESHIRE EYE SOCIETY PLANTER**

Following a successful shout out to community groups, the Eye Society came forward to adopt a planters. Tactile and aromatic plants were chosen by the Lead Ranger and were planted up and tended to by members of the organisation. A braille notice compliments the planter.



### **LITTER PICKING**

Macclesfield is lucky in that it benefits from a number of socially conscious people who love to litter pick around the town. With pickers, hoops and other items of kit provided by the Town Council the community have even created their own map of where has been picked!



### **MACCLESFIELD COLLEGE**

Macclesfield College have created a beautiful garden area for staff, students and visitors with help from MTC, Macclesfield Football Club, Eskmuir and others.





---

## COMMUNITY - PROJECTS AND PARTNERSHIPS CONT.

---

### SOUTH PARK MASTER PLAN

Macclesfield Town Council is working and supporting Cheshire East Council with regards to the South Park Masterplan, which includes plans for a wetland planting, planting of tree species including hawthorn which is great for supporting wild birds, creation of a reed bed, and specific planting for wetland areas.

#### Planting Palette



Wetland planting.



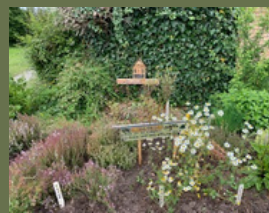
Perennial plants will replace some of our bedding displays.



Native bulb planting.

### MACCLESFIELD LEISURE CENTRE

Macc Wild Network along with Food 4 Macc, have been working hard at the leisure centre. They have created wild flower areas with a view to increasing the wildlife in the area and in particular pollinators, an orchard, as well as food beds for the general public.



### EAST CHESHIRE HOSPICE

Professional garden designer Ben Darlington has worked with volunteers at East Cheshire Hospice to create their new Serenity Garden, which features the yellow hospice rose which was featured at RHS Tatton. Ben was keen for the garden to evolve year round, always with something in bloom. The design is also part of the Hospice's green initiative. Ben said: "Plants are by definition a renewable resource – compared to so many landscaping materials like paving from another country. "The emphasis is on sustainability and with a deep layer of moist compost, it won't need watering nearly as much. Much of the garden is herbaceous grasses and plants. It'll be lovely from day one with a wow factor this summer, but will get even better and in five years will really feel mature."





---

## COMMUNITY - PROJECTS AND PARTNERSHIPS CONT.

---

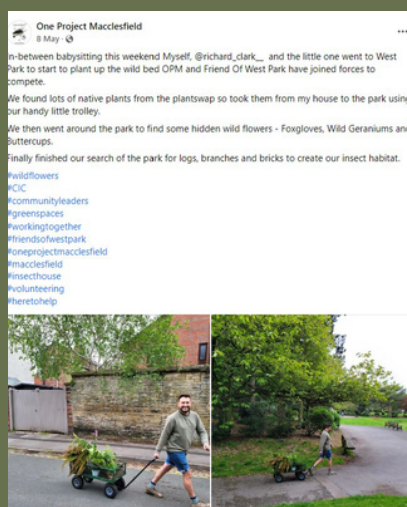
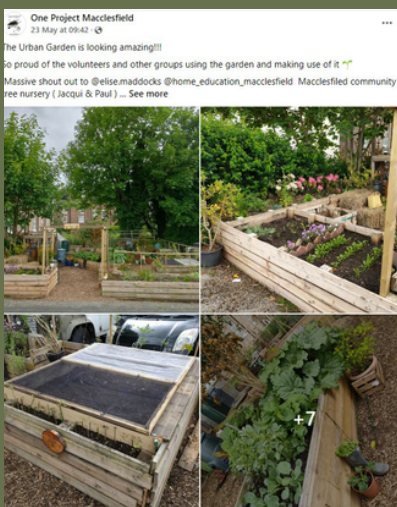
### CHRIST CHURCH MACC CCM

The Christ Church group have a dedicated band of volunteers who are intent on improving the grounds of Church which was built in 1775 by Charles Roe.

The group have created off the ground, grass seating areas, complete with tables made of reused materials to encourage people to use the area for lunch breaks and for sitting and enjoying the planting. With swathes of forget-me-nots and snowdrops giving colour to the area, alongside donated garlic plants, magnolias, bronze leaved fennel, and thousands of bulbs and plants which were tucked into their new beds by volunteers from the community as well as the team at the church.



### ONE PROJECT MACCLESFIELD - WELLINGTON ROAD AND WEST PARK



Local group One Project have been extremely busy this year. Lots of work has been done by them and their team of volunteers to the Urban Garden on Wellington Street. Located just off one of the main roads through the town centre, and next to the town's largest car park, the group have recently started working with a home education group, and regularly hold open

open sessions for local residents or interested persons to come along and join in with planting, weeding or even a litter pick. OPM have also taken over some raised beds in West Park and have worked with local nurseries to demonstrate how to plant and look after seeds and plants.



---

## VOLUNTEERS

---



The Town Council are lucky to have a number of volunteers who help support our Rangers whilst also looking after their own projects

- Work Experience student Maddie Brewin
- Pizza Express Manager Erin Owen
- Grow Macclesfield's Alejandra Salmon-Suarez
- Val Lloyd
- John Williams



## THE ROUTE

- ..... Driving Route
- ..... Walking Route

Macclesfield  
Leisure Centre

East Cheshire  
Hospice

West Park Community  
Garden Centre

Wildflower  
Meadow

Town Hall

Sparrow  
Park

Old Sunday  
School

Ian Curtis  
Mural

Heritage Walk

Portland Walk

South Park &  
Community Allotment

