

# MACCLESFIELD IN BLOOM

PORTFOLIO 2023







# ABOUT MACCLESFIELD

Macclesfield has been a Britain in Bloom town since 2018. As well as focusing on bringing a variety of colours, textures and scents to the town, in order to create an attractive place to live, work and visit, the Macclesfield in Bloom committee are also focused on adding to our activities and embracing a more sustainable approach. This includes: making the switch to peat free compost, making our planting more sustainable, increasing the biodiversity of the area as well as making greater use of recycled materials.

Macclesfield Town Council continue to be the main financial supporter of Macclesfield in Bloom, whilst also offering the support of the Macclesfield Town Ranger team and administrative help.

---

**MACCLESFIELD TOWN  
RANGERS LOOK AFTER  
OVER 70 PLANTERS AND  
AREAS AROUND TOWN**

---

# MACCLESFIELD TOWN RANGERS

---



---

2022/23 has been a busy year for our Town Rangers. Due to a job opportunity our Lead Ranger left the team, with Damon and Shaun picking up the extra work between them.

James was recruited to the team in April this year. He brings with him skills to fill the gap in horticultural knowledge and compliments the team perfectly, while congratulations go to Damon who took over the role of Lead Ranger in July 2023.

With existing planting schedules to follow, plus assisting various community groups around the town with their planting, watering of planters, cleaning up grot spots, repainting road signs, and a continual battle tackling graffiti - the Rangers are extremely busy as well as being a popular part of the Town Council family, with over 1.3k followers on social media.



# OUR

## July

- The Macclesfield Town Rangers and colleagues from ANSA/Cheshire East complete the summer planting across the town
- End of July saw the town's Britain in Bloom judging



## August

- Green group 'One Project Macclesfield' help to create raised beds for local Ukrainian families to grow food for the community
- August sees National Allotment Week



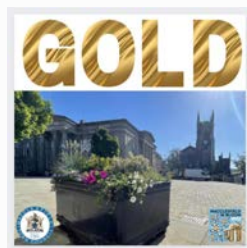
## September

- Preparations for Nature Needs You and our Eco Summit ramp up. Nature Needs You is full day of events for children to introduce them to the outdoors



## October

- Macclesfield in Bloom awarded GOLD at the North West in Bloom awards in Bolton



## November

- One Project start work with local community group to create an allotment
- New logo for Macclesfield in Bloom



## December

- Town Rangers keep road signs across the town visible and clean
- The Rangers keep the verges looking neat and tidy

# YEAR

## January



- Work was started by the Town Rangers on the area of land near Sainsburys, to prepare it for re-planting with wildflower seed

## February

- Macclesfield Tree Nursery look for foster parents for 115 baby trees
- Macc Wild Network help St Albans school make a start on planting trees



## March

- Town Rangers start to prep the land for wildflowering in April
- Grow Macclesfield along with Cllr Sandy Livingstone have an allotment day, complete with food supplied by a local Syrian family

## April

- MTC started the promotion of No Mow May around town
- Wildflowering starts! Volunteers, Town Council staff and Rangers sow 4 areas

Macclesfield Town Council supports



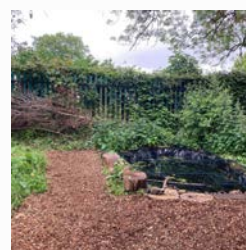
## May

- Portland Walk garden has a tidy by the Town Rangers due to an increase in dog fouling and litter
- Macc in Bloom planter re-planted by Town Rangers, to compliment planting by One Project Macclesfield



## June

- Grow Macclesfield help local school, Christ the King, to build a pond and wildlife area
- Local company donate wildflower seeds to Macc Wild Network







---

## HORTICULTURE - WILDFLOWERS

---

Following the success of the trial wildflowering at Sainsburys roundabout in 2022, the Town Council were able to obtain agreement from Cheshire East Highways and ANSA to rewild a number of other areas.

Sainsburys - this is an area that was wildflowered in 2022 and had great feedback. A shaded mix was tried this year, but the trees block too much light, so the Town Rangers will come up with a plan for 2024!

Pexhill Road - this was an area on the Weston that was suggested by Cllr Mike Hutchinson. Two strips of bare grass that ran alongside a junction are now a beautiful riot of colour and full of bees!

Bus Station - this patch of land was essentially scrub land, with nothing of value planted or sprouting. The wildflowers did take longer to bloom than the other areas, but have now brought to life this neglected patch which was often prone to anti-social behaviour.





## HORTICULTURE - PUBLIC REALM - SMALL RETAIL

### Upper Market Place

One of the most vibrant floral areas in town is the space around the Town Hall, 'Upper Market Place'.

What started in 2021 as a project during lockdown, to bring an outside dining/drinking area to the town, has resulted in a beautiful green area.

With planters being used instead of ugly street furniture and bollards, hanging baskets on the local businesses and planted crown features, enhancing the entrance to the Market Place, the space is a constant source of delight and receives many comments from members of the public.

The local businesses assume some responsibility for the tidying of the planters and the watering of the baskets outside Fitzgerald House.





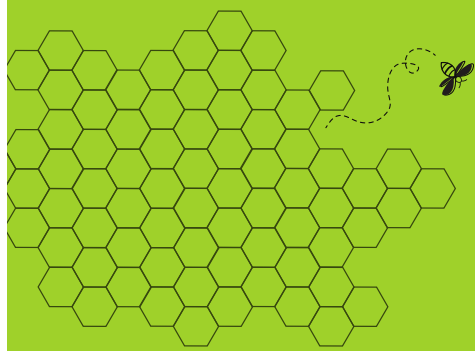
## HORTICULTURE - MACCLESFIELD BUSINESSES



Proper Sound  
PR Jones  
Gas Town Cafe Bar  
N Carters Butcher  
Cherry Blossom Bakery  
Salt Bar  
Five Clouds  
R&G Beer Vault  
Plums Kitchen  
The Society Rooms  
The White Lion  
Cheshire Cat  
The Castle  
La Dulce Vendimia  
Holden & Prescott  
Heritage Centre  
The Earl of Mercia  
Kavanagh & Associates  
Old Millstone  
Acacia Tree



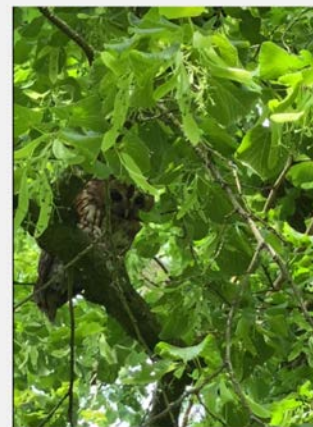




## ENVIRONMENT- BIODIVERSITY

A lot of the planting work done around the town is dual purpose. Not only does it bring greenery to the town, encourage others to try sustainable planting, create beautiful floral displays and increase variety, but it also creates the perfect habitat for wildlife. Some of the work done has been specific in trying to increase pollinators and bird life.

The work done by Grow Macclesfield in creating a fantastic allotment in South Park, and the work of ANSA Environmental Services Ltd in rewilding parts of South Park and remodeling sections of the pond banks, has created a fantastic habitat for a wide ranging number of plants and animals. The results of this were witnessed recently when a local resident, who backs onto South Park, noticed a Tawny Owl nesting in a neighbour's tree. The rich and varied food sources that can now be found in the park has meant that two health Tawny Owl chicks have now hatched and fledged and are returning to the park themselves.



We live adjacent to South Park and have enjoyed hearing owls at night for as long as we live here. But this spring something special happened: we became aware of nesting Tawny Owls in our neighbour's coppice. He is a tidy gardener (contrary to ourselves) but leaves this part to wildlife. A pair of badgers is in residence there in a sett under a rotten tree stump. Owlets have now flown the 'nest' but are still hanging around the area. Pictured is mama owl in our lime tree, watching out for her young, presumably the only reason she's allowing herself to be seen in broad daylight. At nighttime it's fascinating to hear and see (!) them hunting. We believe that the recent rewilding efforts in the park, particularly around the pond, where the thick reeds are home to voles and amphibians, have massively improved conditions for owls and other birds of prey to thrive in what is essentially the middle of town. Whoever was responsible for turning South Park around deserves a huge pat on the back.

### Swifts Over Macclesfield

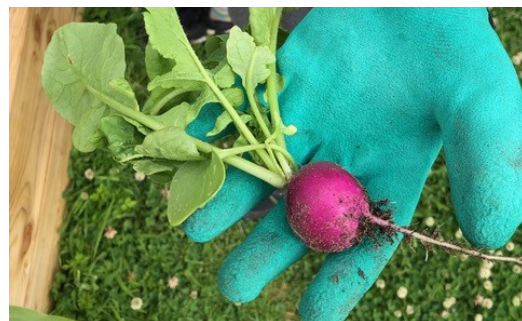
What an amazing turn out for our 'Swift Walk from St. Peter's' event last night. Crowds of people, plenty of swifts, incredible views. Thank you to our attendees for their enthusiasm and interest and especially to all those at St. Peter's who have been championing swift boxes in the Church Tower.



The Swifts Over Macclesfield project, that the Town Council made a grant to in 2019, continues to actively educate people about the swifts in Macclesfield. As confirmed by a recent social media post from the start of July, swifts are still plentiful over Macclesfield and this is partly due to the varied landscapes and environments which play home to the swifts food sources.



## COMMUNITY - PROJECTS AND PARTNERSHIPS



### ST ALBANS SCHOOL

Written by Beth Rushton,  
Teacher, St Albans Primary School

In September 2021, we created a weekly after-school Gardening Club. With special thanks to Food4Macc, we now have two raised beds which have become the main focus of our Gardening Club activities. The children have been able to sow and harvest a wide range of produce including lettuce, radishes, kale, courgettes, beetroot and carrots. The children have relished the opportunity to take home their harvest and share them with their family. They have also taken part in maintenance tasks on the plot and have become responsible for watering the plants in hot weather, thinning seedlings, re-potting plants and weeding between rows.



As a gardening club, we established early on that we wanted to help our planet and recycle and reuse materials as much as possible. We have created smaller raised beds from an old wooden toy chest, a sweet pea trellis using an old greenhouse frame and we have made and used our own leaf mould from the leaves collected around school. We are also in the process of making our own compost from fruit peelings, grass cuttings and shredded cardboard donated and delivered by eLov (a local electric cargo bike initiative).

As a school, we have also worked closely with Macc Wild Network. They created a wildflower meadow on the school grounds in Autumn of last year, which the children have since loved walking through and spotting a whole host of minibeasts this summer. In February this year, school staff, children, parents and volunteers collaborated to plant over 800 trees and hedging plants around the school fields. Hawthorn, buckthorn, dog rose and hazel will form beautiful, natural hedges and semi-enclosed play areas in the years to come. Rowan, alder buckthorn (a favourite of brimstone butterflies), oak, cherry and birch will form shade and more wildlife-rich habitats in the school grounds.





## ST PETERS CHURCH



St Peter's church is located in the East of Macclesfield and is really proud of its creative side with activities including music, bellringing, gardening, art, crafts, astronomy and even theatre. The church also welcomes community groups to use its building. The church has two activities which centre around their gardens.

### The Garden Project

St Peter's Community Garden project and its head gardener, Maria Hyde, works with volunteers and aims to encourage appreciation of nature, growing plants and promoting bio-diversity. The group have even created a pond.

The gardens have been supported by Cheshire East Council, Tesco and the Co-op, which has helped the volunteers to set up a polytunnel, potting shed, workroom and raised beds. Working the gardens, as part of a group, is a great way of getting to know each other and a celebration of the natural environment and growth.

From Spring until Autumn, Church members and helpers from Rossendale work together between 10 and 12 on Monday mornings. All are welcome to join us.



### Wildflowers

Macclesfield Town Council funded a grant to St Peters Church, and by working with Macc Wild Network, the church and their volunteers have taken over a bit of the churchyard which was underused and have established a wildflower area. Currently over 27 types of wildflowers can be found at St Peters.





## SPACE4AUTISM

Written by Lisa Warburton,  
S4A Communities and Project manager

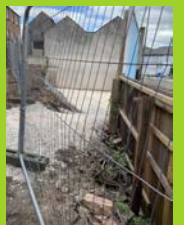


The Garden which belongs to our charity, Space4Autism, is named “Angie’s Sensory Garden” in memory of a lady who sadly passed away. Angie volunteered for us and did lots of amazing work.

We are extremely proud of our garden which is available for our members to enjoy. The garden was funded by The Mather Trust, Auto Trader, donations in memory of Angie and from our fundraising. We created the garden with help from local gardener Tom Isherwood. The garden is maintained by our staff, supported by volunteers, many of whom are members of Space4Autism, ie have Autism themselves providing them with a positive opportunity to use their gardening skills.



# Before



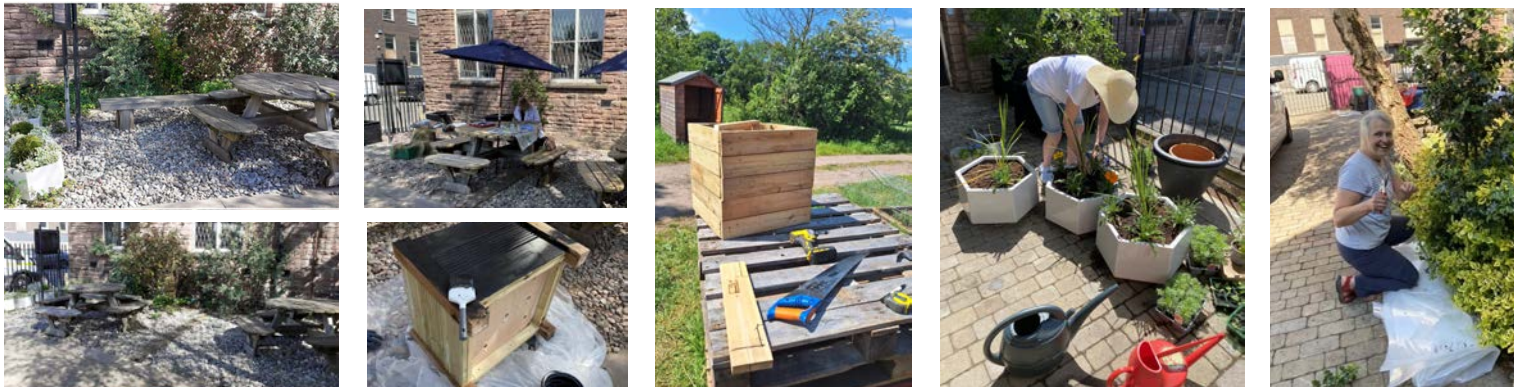
The garden is used by our members – it provides a really peaceful place for them to come and enjoy some quiet and members often tell us they find the garden really relaxing. It is also open to members of the public who use our community café. We also run social clubs for Autistic children and young Autistic people and adults, and these members really enjoy using the garden for example doing garden games, having a BBQ, and members enjoy helping to look after the garden too. Most visitors are really surprised by the garden, not expecting such a lovely space to be here, it is lovely to see peoples surprised faces! We have strawberry plants, tomato plants, lavender, alliums, poppies, acer tree....it really is a delight for your senses.



# After





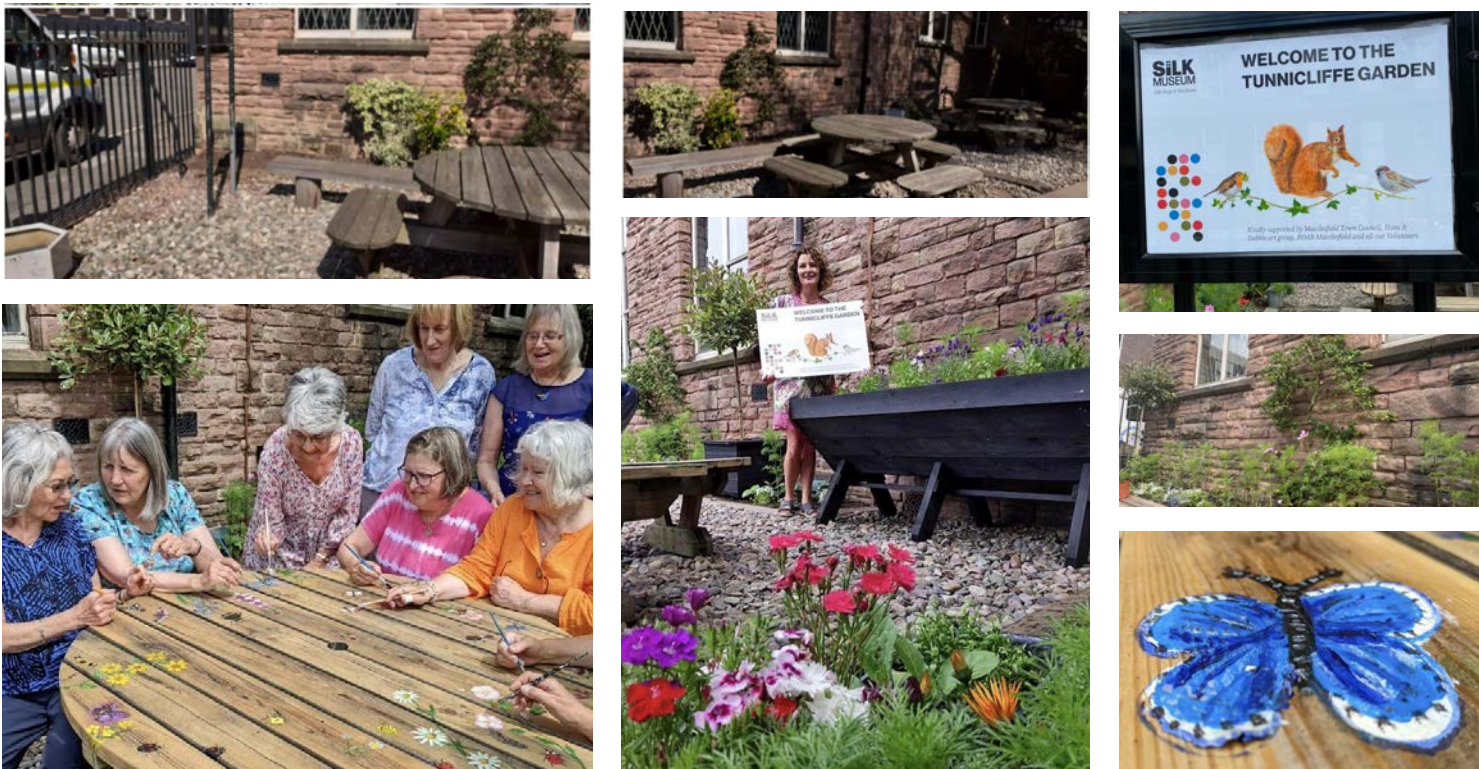


## SILK MUSEUM

The Tunncliffe Garden is a project that staff, volunteers and trustees at the Silk Museum have been working on since the start of the year. With careful planning, planters made by local organisation Reach Out and Recover, horticultural help from the Macclesfield Town Rangers, plus donated plants, the garden has changed from a barren outside courtyard to a peaceful haven.

Artists from the museum's 'Have a Dabble' group have even brought the essence of Tunncliffe to the garden furniture by painting flora and fauna on the surfaces.

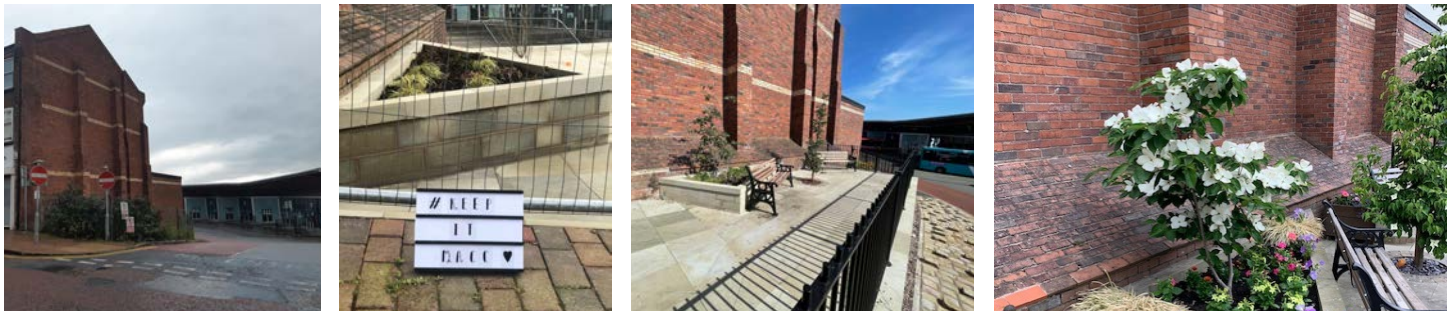
The long term plan is that the garden is used as an extension of the museum and will be accessible to all visitors, including overflow from the café. It is being used by visiting groups such as the tots group, and for school groups to have their lunch. The museum's art groups/workshops and classes will also be using it as a workspace and for sketching/painting.





POCKET PARK

In September 2021, the pocket park at the bus station was completed. Funded by Cheshire East Council and maintained by Macclesfield Town Council Rangers, it used to be an area of land full of litter and a magnet for anti-social behaviour.



The pocket park has an established bed, against a sunny wall, with seating that is regularly in use during the day. A white cornus (dogwood) has been used as a focal point for the bed and was full of blooms earlier in the year. The colour and textural plants around the base of the tree provide an eye catching display day in and day out.

The Rangers have recently finished the lower bed at the pocket park which now has more planting and looks much fuller. This enhances the experience of those taking in the Ian Curtis mural painted by Aske-P19 in 2022.



GARDEN OF HOPE

Taken over in October 2021 by Grow Macclesfield and officially opened in August 2022 by then Mayor of Macclesfield, Cllr Fiona Wilson, this overgrown and unused allotment has been turned into a sanctuary used by those who are keen to learn how to grow their own plants and vegetables.

The Garden of Hope was primarily set up for use by the displaced Ukrainian families who came to Macclesfield to escape the war.



BEFORE

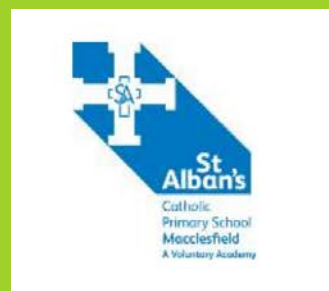
AFTER





Macclesfield In Bloom Committee; Janet Jackson MBE, John Williams, Damon Bayley, Laura Smith, and Abi Sherratt would like to thank;

The Macclesfield Town Rangers, Alejandra Salmon-Suarez, Grow Macclesfield, Maria Hyde, Doug Christie, Mick Plant, ANSA, Cheshire East Council, Gordon Richardson, Emma Passmore, Macc Wild Network, One Project Macclesfield, The Silk Museum, Sue Gunnion, St Peter's Church, St Albans Primary School, Beth Rushton, Food4Macc, Space4Autism, Cheryl Simpson, ELOV,





# THE ROUTE

- ..... Driving Route
- ..... Walking Route

