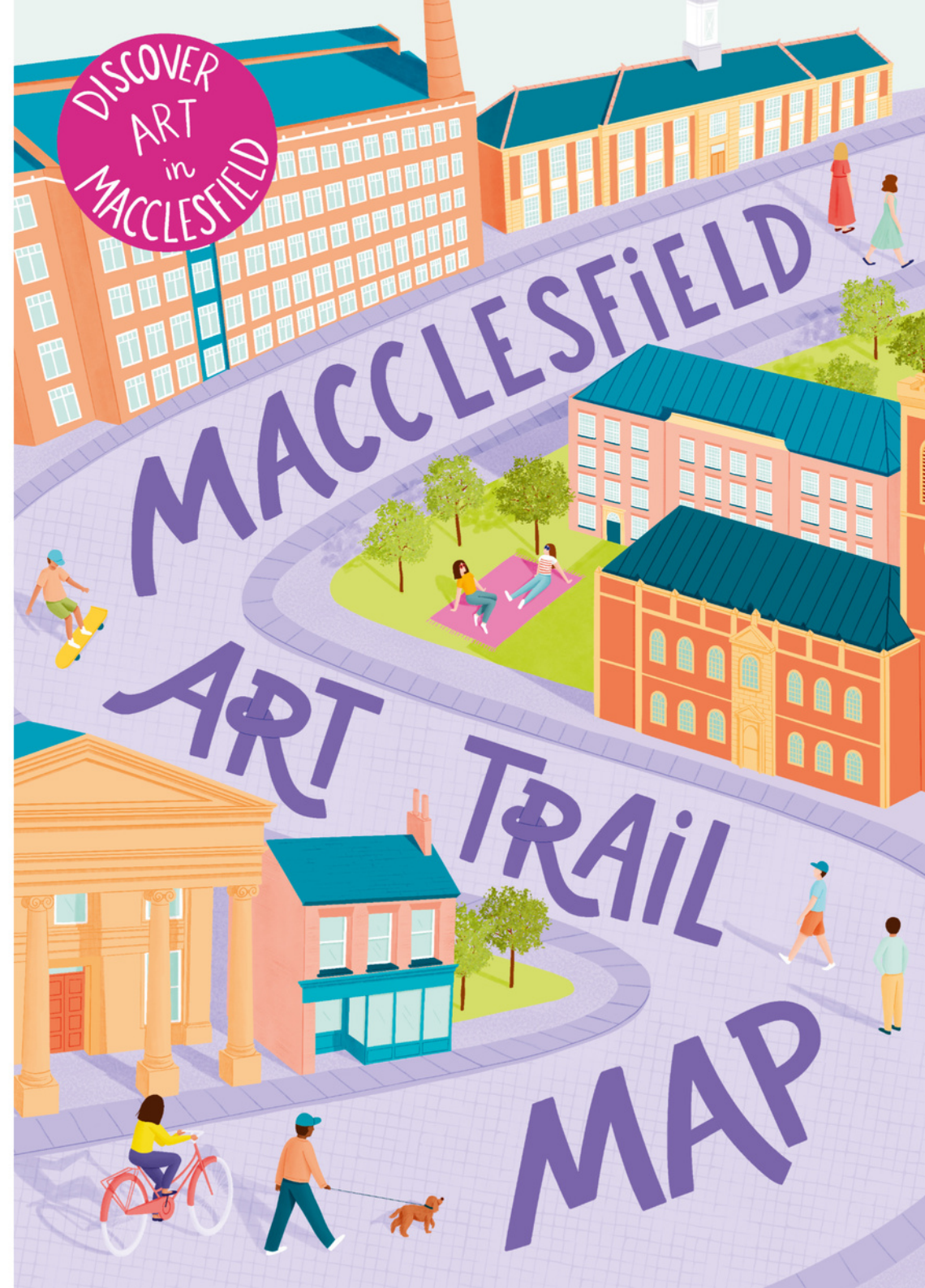


This map represents outdoor public art works across Macclesfield commissioned by Cheshire East Council, Macclesfield Town Council and independent businesses.

With thanks for funding from Avanti West Coast's Customer & Communities Investment Scheme which enabled Cheshire East Council to commission:

1. Swifts by Peachzz
3. Peregrine Falcon by Tom Edwards at We Are Culla
4. Birds by Tom Heaton
5. Fox & Hare by Ethan Lemon
6. Snowgeese by Peachzz & Katie Scott
7. Macclesfield Forest by Becca Smith
8. Waxwing by Tom Edwards at We Are Culla
9. Waxwing Flight by Tom Edwards at We Are Culla





A love letter to Macclesfield  
 Drawn to you  
 I fell in love with  
 the culture of a silk town

# MACCLESFIELD ART TRAIL MAP

1. Swifts by Peachzz, inspired by Charles Tunncliffe. Macclesfield Train Station Platform 3 far side. For a view over Macclesfield, cross the Silk Road and proceed up Davenport Street to the top of the hill

2. Macclesfield Townscape by Tim Davies. Opposite the station entrance
3. Peregrine Falcon by Tom Edwards at We Are Culla, inspired by Charles Tunncliffe. 33 Sunderland Street Shutter
4. Birds by Tom Heaton, inspired by Charles Tunncliffe. 42 Sunderland Street Shutter
5. Fox & Hare by Ethan Lemon, inspired by Charles Tunncliffe. 51 Sunderland Street Shutter
6. Snowgeese by Peachzz & Katie Scott, inspired by Charles Tunncliffe. 52-54 Sunderland Street
7. Macclesfield Forest by Becca Smith. 53 Sunderland Street
8. Waxwing by Tom Edwards at We Are Culla, inspired by Charles Tunncliffe. 55 Sunderland Street Shutter
9. Waxwing Flight by Tom Edwards at We Are Culla, inspired by Charles Tunncliffe. 56 Sunderland Street Shutter
10. LumenART changing exhibition, illuminated at night. Old Library Car Park, Park Lane
11. Tunncliffe Garden Art. Silk Museum, Park Lane. Open Wed-Sat 10am-4pm & last Sunday of the month
12. Ian Curtis Mural by Akse. 86 Mill Street, adjacent to the Bus Station
13. Pop In by Tom Heaton. 5 Back Wallgate
14. Macclesfield Townscape by Becca Smith. Churchill Way Car Park
15. Excerpts of Love Letter to Macc by Arc. Castle Street pavement
16. 01625 Micro Gallery Telephone Box changing exhibition. Outside Town Hall, Market Place
17. Mural by Krek & Matt Sewell. 69 Pickford Street
18. Dark & Stormy by Andy Parle. 27 Pickford Street
19. Heritage Images by Glassball. Waters Green, Gas Road, Thorpe Street
20. Heritage Images by Glassball. From Waters Green follow the River Bollin along Middlewood Way. Heritage images displayed on the red brick wall alongside the path.